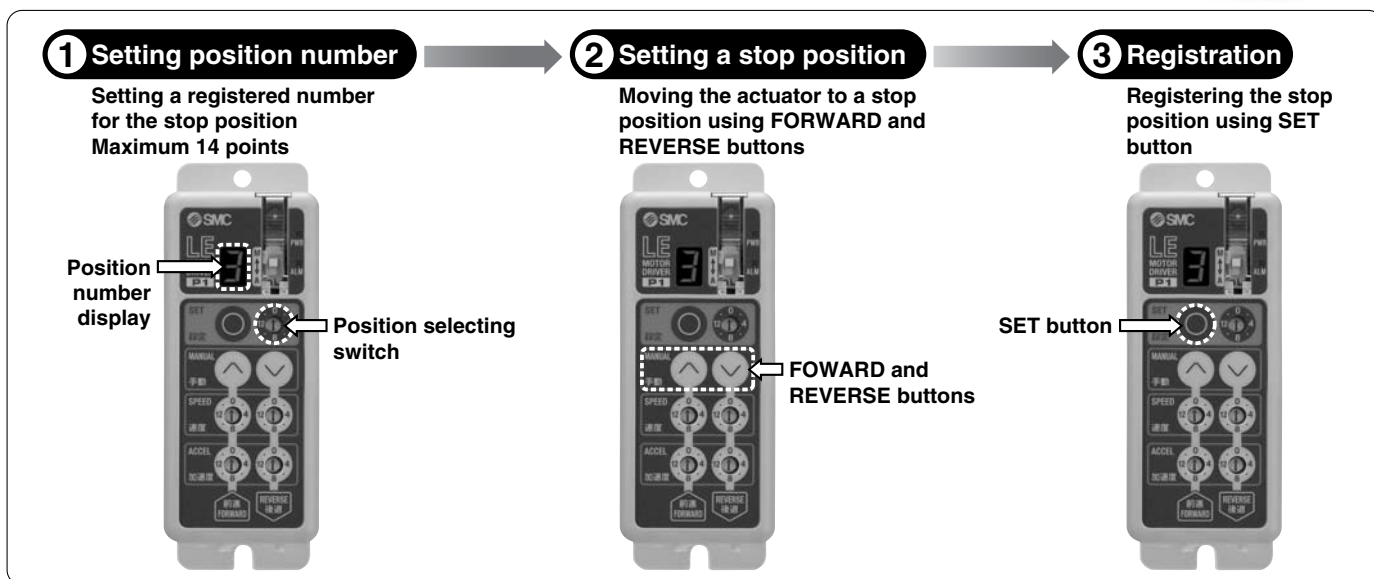


Programless Controller Series *LECP1*

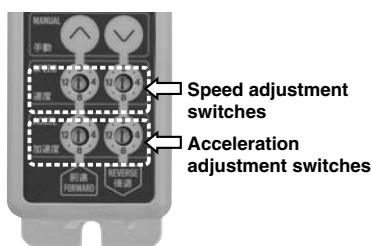


- Applicable to 14 points of positioning
- No programming

Capable of setting up an electric actuator operation without using a PC or teaching box



- Speed/acceleration 16-level adjustment



- Compatible with actuators with locks
- Setting 3-level pushing force
- Compatible electric actuator

Compatible actuators	Catalog No.
Electric Grippers Series LEH	ES100-77
Electric Slide Table Series LES	ES100-78
Electric Actuator/ Rod Type Series LEY	ES100-83
Electric Actuator/ Slider Type Series LEF	ES100-87
Electric Rotary Table Series LER	ES100-94

Specifications

Item	LECP1
Compatible motor	Step motor (Servo/24 VDC)
Power supply ^{Note 1)}	Power supply voltage: 24 VDC ±10% Current consumption: 3 A (Peak 5 A) ^{Note 2)} (Including motor drive power, control power, lock release)
Positioning points	14 points
Operation	Positioning operation/Pushing operation
Adjustment method	Adjustment using the control panel • 3 push buttons: SET button, Manual buttons • Change-over switch (Automatic/Manual) • 5 rotary switches: Position selecting switch, Speed adjustment (forward and reverse), Acceleration/deceleration adjustment (forward and reverse)
Number of controlled axis	1
Parallel input	6 inputs (Photo-coupler isolation)
Parallel output	6 outputs (Photo-coupler isolation)
Compatible encoder	A/B phase, Line receiver input Resolution 800 p/r
Memory	EEPROM
Lock control	Forced-lock release terminal
Cable length (m)	I/O cable: 5 or less Actuator cable: 20 or less
Cooling method	Natural air cooling
Operating temperature range (°C)	0 to 40
Operating humidity range (%)	35 to 85 (No condensation and freezing)
Storage temperature range (°C)	-10 to 60
Storage humidity range (%)	35 to 85 (No condensation and freezing)
Weight (g)	128

Note 1) Do not use the power supply of "inrush current prevention type" for the controller DC power supply.
When using "inrush current prevention type," the actuator may not be able to operate at maximum capacity.

Note 2) The power consumption changes depending on the actuator model. Refer to the specifications of actuator for more details.

How to Order

Controller with actuator

LEFS16B-100-R3 1N 1

Actuator type

Refer to "How to Order" in the actuator catalog and indicate the model. For compatible actuators, refer to the table below.

Example: **LEFS16B-100-R31N1**

Compatible actuators	Catalog No.
Electric Grippers Series LEH	ES100-77
Electric Slide Table Series LES	ES100-78
Electric Actuator/Rod Type Series LEY	ES100-83
Electric Actuator/Slider Type Series LEF	ES100-87
Electric Rotary Table Series LER	ES100-94

I/O cable length

Nil	None
1	1.5 m
3	3 m
5	5 m

Controller type

Nil	Without controller
1N	With programless controller (NPN)
1P	With programless controller (PNP)

Part number for actuator and controller set.

Controller

LECP1N1-LEFS16B-100

Controller

Compatible motor

P	Step motor (Servo/24 VDC)
----------	---------------------------

Type

1	Programless controller
----------	------------------------

Parallel input

N	NPN
P	PNP

I/O cable length

Nil	None
1	1.5 m
3	3 m
5	5 m

Actuator part number

(Except cable specifications and actuator options)
Example: Enter [LECP1N1-**LEFS16B-100**] for LEFS16B-100-R31N1

This part number is for ordering the controller unit by itself.
When placing an order for the controller with an actuator, this part number is not necessary.

Dimensions

